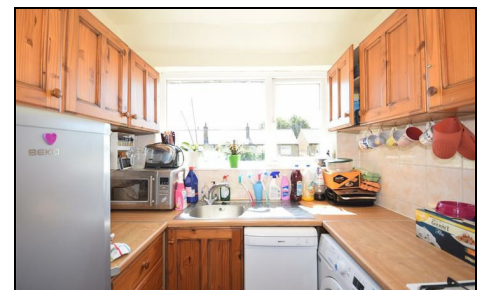


Runnymede Colliers Wood, SW19 2PG

£335,000 Leasehold

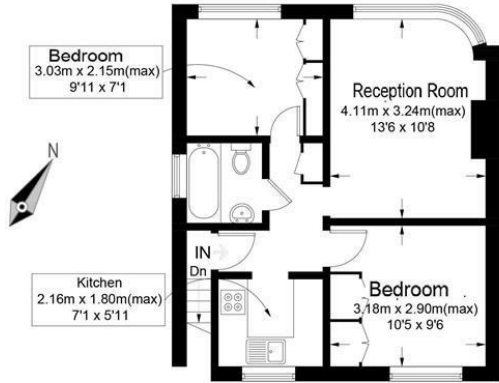


Excellent value two bedroom garden maisonette with easy reach of Colliers Wood town centre and tube station. The property benefits from gas central heating, double glazing, and is a superb first time buy or investment property.

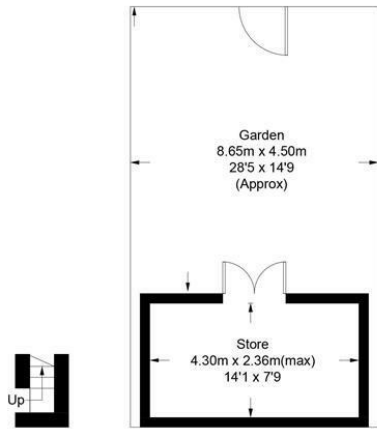
Runnymede, SW19

Approximate Gross Internal Area

Total= 43.1 sq m / 463 sq ft



First Floor

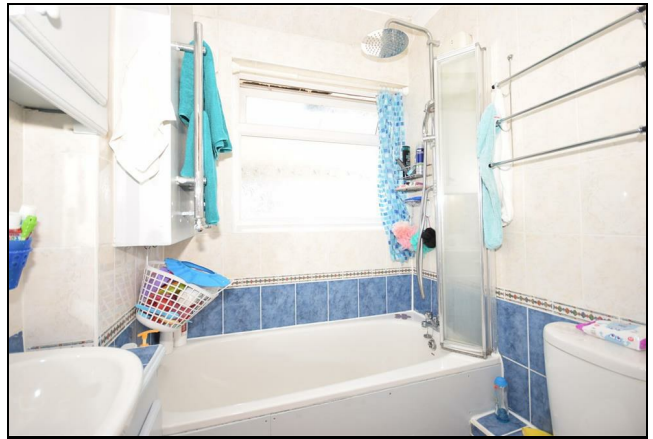


Ground Floor

(Not Shown In Actual Location / Orientation)

This floor plan is for representation purposes only and is not drawn to scale. Whilst every attempt has been made to ensure its accuracy measurements are approximate only and should be checked before making any decisions reliant upon them.
Copyright Bespokeplans.co.uk 2017
(ID343420)

- Own Front Door
- Private Garden
- Gas Central Heating
- Two Bedrooms
- EPC Rating D
- Close to Transport Links



Energy Efficiency Rating		Current	Potential
Very energy efficient - lower running costs			
(92 plus) A			
(81-91) B			
(69-80) C			
(55-68) D			
(39-54) E			
(21-38) F			
(1-20) G			
Not energy efficient - higher running costs			
		67	77
England & Wales		EU Directive 2002/91/EC	

Environmental Impact (CO ₂) Rating		Current	Potential
Very environmentally friendly - lower CO ₂ emissions			
(82 plus) A			
(81-91) B			
(69-80) C			
(55-68) D			
(39-54) E			
(21-38) F			
(1-20) G			
Not environmentally friendly - higher CO ₂ emissions			
		67	80
England & Wales		EU Directive 2002/91/EC	

For Free Mortgage Quote and Best Mortgage Rates, call an Ellisons Mortgage Advisor on 020 8544 0518



Although these particulars are believed to be correct, their accuracy is not guaranteed and they do not form part of any contract.

Celebrating 30 years of successful Sales and Lettings in Merton

